

# mANT30 series

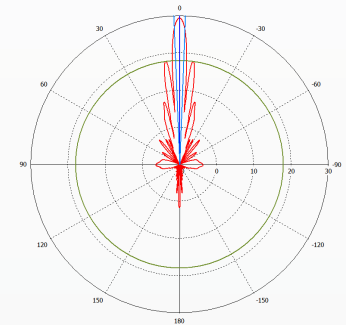
**mANT30** is a professional class 5 GHz 30dBi dish antenna, built to the highest industry standards. Built to seamlessly accommodate our Basebox series products, but can be used for any pole mounted wireless device due to the adequate length of the included FlexGuide cable.

Two antennas are available, with a **standard type mount (MTAD-5G-30D3)**, and with a **precision alignment mount (MTAD-5G-30D3-PA)**. The antennas come packaged with all necessary accessories and cables.

## Electrical Specifications

|                            |   |
|----------------------------|---|
| Frequency Range            | 4.7-5.875 GHz   |
| Gain                       | 30 dBi typically  |
| Polarization               | Dual (Vertical and Horizontal)                            |
| 3dB Beamwidth              | +/-2.5 deg  |
| Standards                  | Complies with EN 302 326 DN1, DN2, DN3, DN5               |
| VSWR                       | ≤ 1.4 typ, ≤ 1.8 max                                      |
| Port to Port Isolation     | >40dB min   |
| Front-to-Back Ratio        | >30 dB  |
| Cross Polarization         | >40 dB  |
| Power Rating               | 100 watts   |
| Impedance                  | 50 ohms   |
| Elevation adjustment range | +/- 20 deg (MTAD-5G-30D3),<br>+/- 15 deg (MTAD-5G-30D-PA) |

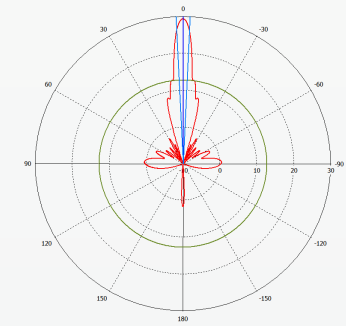
Horizontal polarization



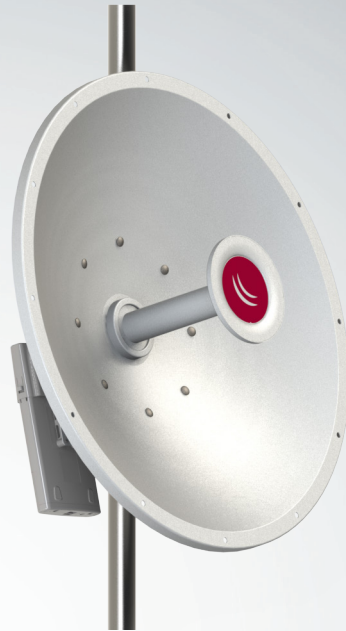
## Physical/Environmental Specifications

|                           |   |
|---------------------------|---|
| Diameter x Depth          | 70 x 45cm (27.5 x 17.8in)   |
| Weight neto               | 5.7kg (12.6 lbs) PA and 4.8kg (10.7 lbs) standard version   |
| Reflector                 | Aluminum  |
| Outdoor Rating            | ETSI EN 300 019-2-4   |
| Wind Survivability        | 201kph (125mph)   |
| Wind Load (125 mph)       | 181.4kg (400 lbs)   |
| Operating Temperature     | -50°C to 80°C(-49°F to 158°F)   |
| Pole Mount Diameter Range | (MTAD-5G-30D3): 3 to 7cm (1.2 to 2.75in)<br>(MTAD-5G-30D-PA): 3 to 10cm (1.2 to 3.9in)  |
| Connector (2)             | RP-SMA Female (outside thread)  |
| Packaged size             | 73x73x20cm (29x29x8in)  |
| Packaged weight           | (MTAD-5G-30D3): 7.5 kg (16.5 lbs),<br>(MTAD-5G-30D3-PA): 8.4 kg (18.5)  |
| Compatible with           | Can directly mount Basebox and other future RouterBOARD devices, or accept any pole-mounted device  |
| Package includes          | FlexGuide RPSMA RF Cables (RP-SMA-male to RP-SMA-male) x 2pcs; Bracket for mounting BASEBOX series radio; Self-Bonding Tape for insulating the RF cables x 2 slices; Precise alignment mechanisms (PA Version only) |

Vertical polarization

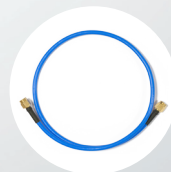


MTAD-5G-30D3  
(With standard type mount)



MTAD-5G-30D3-PA  
(With precision alignment mount)

FlexGuide



Note: Basebox radio not included, available separately.